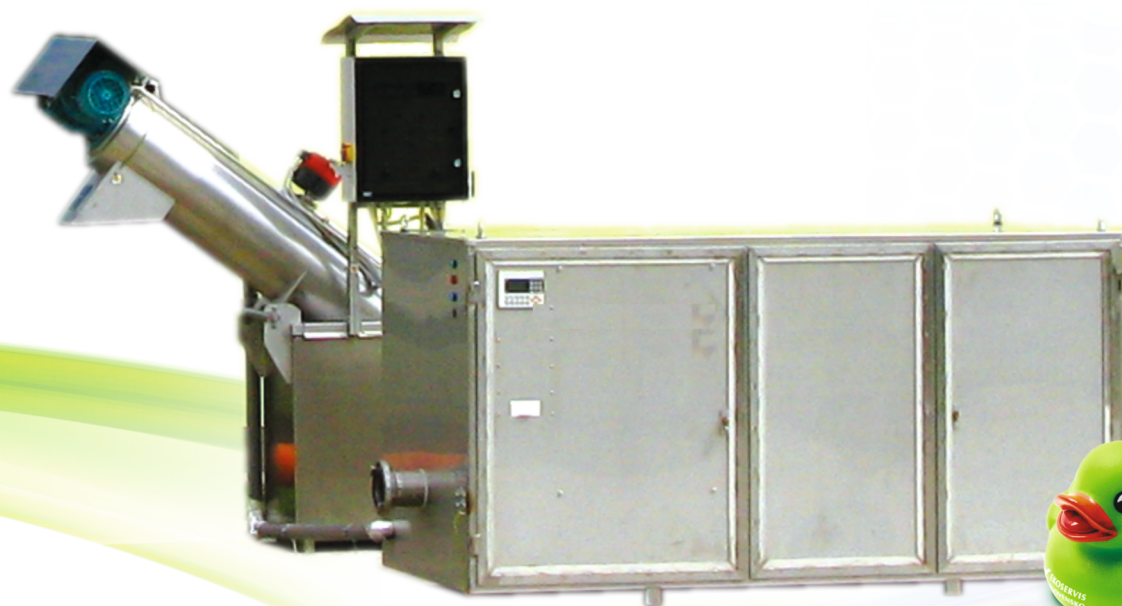




AUTOMATED SEWAGE WATER INTAKE STATION „ASWIS“



AUTOMATED SEWAGE WATER INTAKE STATION „ASWIS“

1. Product

Automated sewage water intake station is intended to collect waste and cesspit water.

2. Process description

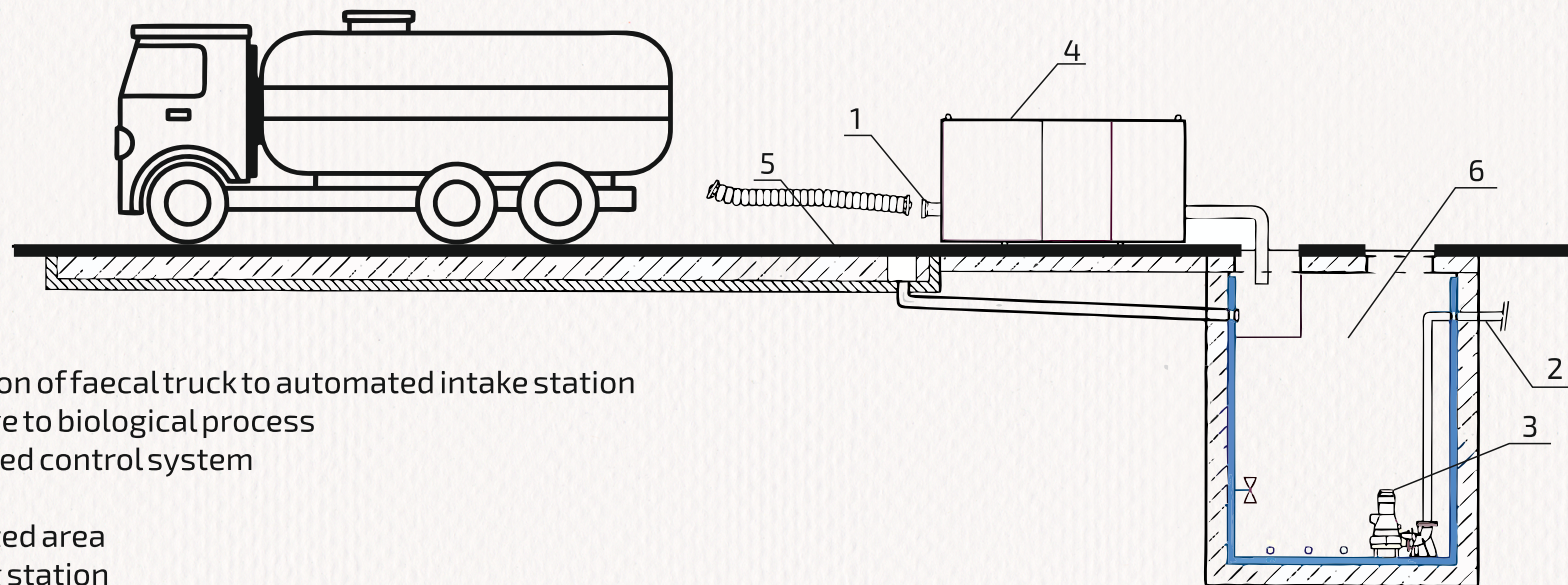
ASWIS is installed upstream the waste water treatment plant. The station includes intake station, coarse pretreatment and accumulation tank.

Intake station measures quantity of delivered waste water, checks the quality and issues the protocol on intake for the treatment process. Cesspit water intake is recorded by a smart card issued upon the contract with the operator company. After a faecal truck connection to ASWIS and identification by a smart card, the sample for quality check is taken.

The values of pH, conductivity and water temperature is monitored as quality indicators. In case the system indicates exceeded values to the limits set up by an operator, the system does not enable the water intake, gate valve does not open. In case waste water is in compliance with the required quality parameters, gate valve is opened and waste water is discharged to the **accumulation tank** through a **coarse pretreatment** and intake unit.

After the intake procedure is completed, the records of water quantity, quality and producer identification data are stored in PC memory. The Protocol for the producer is issued. Delivered water can be aerated and mixed inside the accumulation tank and further pumped by P8 pump to the pumping station in compliance with the instructions from the control system.

Coarse pretreatment is inside the station, dedicated to capture rough and mechanical impurities contained in waste water. Water is discharge manually prior to smart card entering the reader.



LEGEND

1. Connection of faecal truck to automated intake station
2. Discharge to biological process
3. Automated control system
4. ASWIS
5. Compacted area
6. Pumping station

Schéma

3. Advantages

- application for locations of no possibility to construct a sewage pipeline system
- simple service
- automated system
- waste water quality and quantity check
- protocol issuance for the water producer
- data summary for billing
- waste water pumping to treatment process in a set up mode
- interior or exterior design

4. Technical parameters

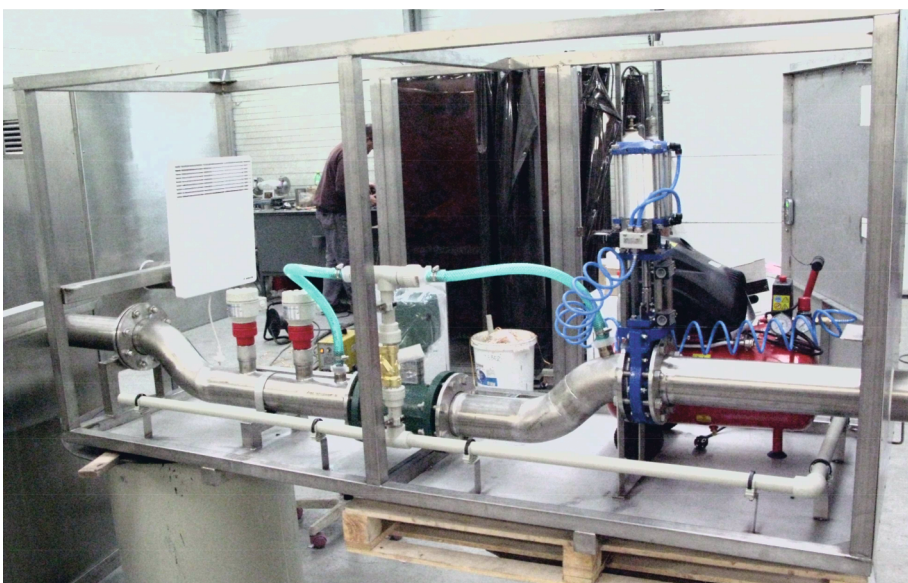
- length 2 200 mm
- width 850 mm
- height 1100 mm



Intake station



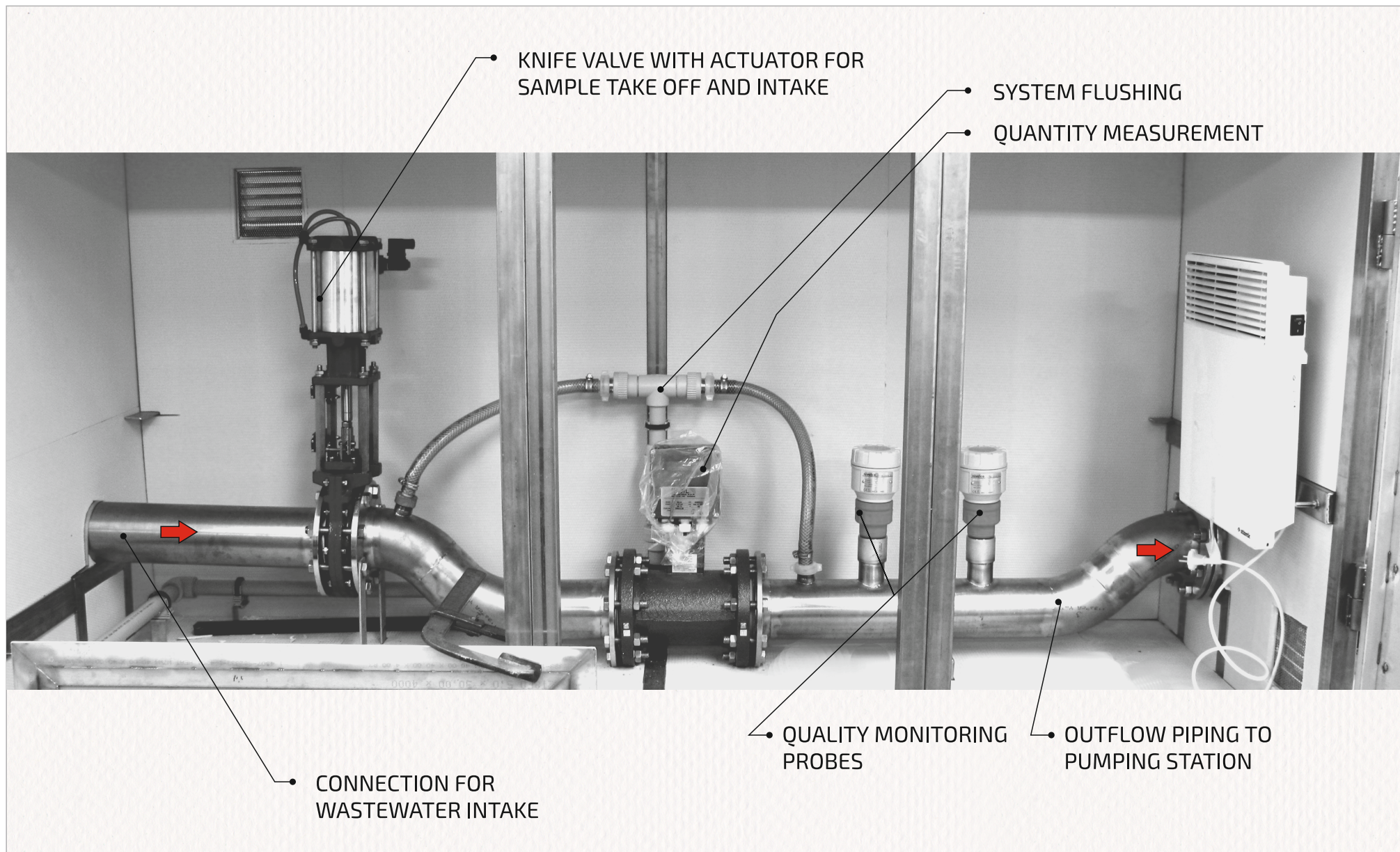
Automatic sewage water intake station with coarse pretreatment



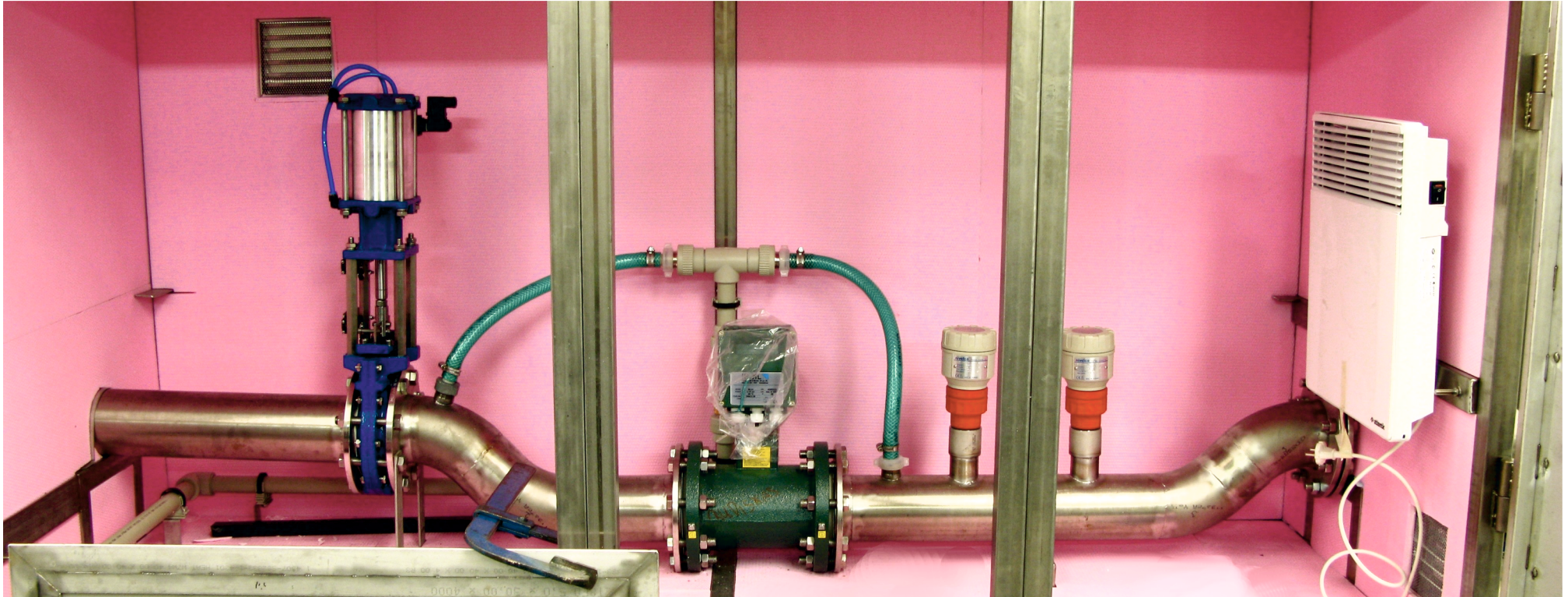
Intake station



Automated sewage water intake station at WWTP building



Process scheme



Automated sewage water intake station

5. Warranty

- ▶ automated station package 36 months
- ▶ technology equipment (blowers, mixers, pumps) 24 months

6. Service

- ▶ we recommend to get the service performed by an authorized professional company with long experience

PURE WATER

FOR THE MANKIND





EKOSERVIS SLOVENSKO, s.r.o.
Stredná 126, 059 91 Veľký Slavkov, SLOVAKIA
Office + 421 52 788 03 11
Sales + 421 905 202 502
Technology service + 421 905 960 431
E-mail: ekoservis@ekoservis.sk
FB: www.facebook.com/cistenievod
www.ekoservis.sk

